

Power Prime™ PUMPS



Model HH-150

Size 8" x 6"

Standard Features

- Hot Dip Galvanized Trailers and Skids
 - Radiator Enclosure
 - Battery Box
 - Wheels
- Zinc Plated Jacks
- Emissions Certified Engines
 - Perkins, John Deere & Caterpillar
- DOT LED lights
- Electric Brakes with Safety breakaway
- Locking Battery Box

Pump Features

- Solids handling capabilities to 1.5" diameter maximum
- Continuous self priming
- Runs dry unattended
- Suction lift to 28 ft.
- Skid or trailer mounted
- Stainless Steel and CD4MCu Pump Option

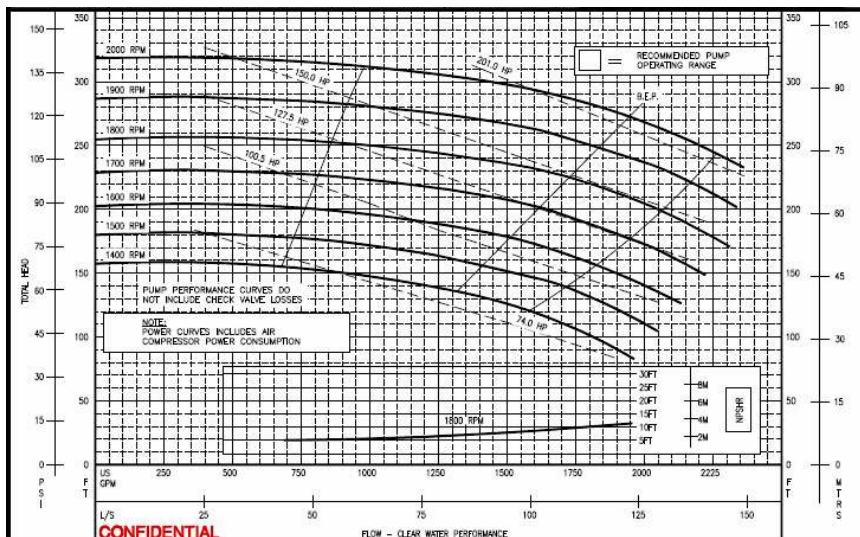


Technical

- Pedestal-mounted and flex-coupled to a diesel engine
- 12 volt, electric start with control panel
- Skid- or trailer-mounted with optional lifting bale
- 24-hour minimum capacity fuel tank
- Compressor/Venturi automatic priming system
- Electric drive option available
- Sound attenuated option available

Material Specifications

- Standard Build - Ductile Iron volute, 316 Stainless Steel open impeller and replaceable wear plates (Chrome option available)
- Pump Shaft
431 Stainless Steel
- Mechanical Seal
Solid silicon carbide mating faces
Oil-bath lubrication for dry running
- Suction / discharge flanges ANSI 150# FF



POWER PRIME™ PUMPS

P.O. Box 2248
Bakersfield CA 93303
800 647-7246
661-399-9058
FAX 661•399-3374
www.powerprime.com
sales @ powerprime.com

Power Prime™ is a registered trademark of Western Oilfields Supply Company. Features and Specifications are subject to change without notice.